

## CONTENTS

Guidelines for Use	4-7
Computer Set-up (Windows & MAC OS)	8-15
Recording Software Settings	15-16
Important Notice	16-17

## WHAT'S IN THE BOX?

- 1 X Microphone
- 1 X Shock Mount
- 1 X Metal Ring
- 1 X B.2' Type A to Type C USB Cable
- 1 X 5/8" Male to 3/8" Female Adapter
- 1 X Bonus Desk Stand
- 1 X User's Manual

Contact Info: Email: [web@fifine.cc](mailto:web@fifine.cc)

Please take a few minutes to watch the video before you start using the microphone.

Operation video: <http://bit.ly/k658problemsolving>

More product consultation can be found on the website.

Company Website: <https://fifinemicrophone.com/>

## WARRANTY

Get 12 months warranty from the date of original retail purchase. This warranty is void if the equipment is altered, misused, mishandled, suffers excessive wear or is serviced by any parties not authorized by Fifine Microphone.

## CERTIFICATION

Eligible to bear CE Marking. Conforms to European EMC Directive 2014/30/EU.

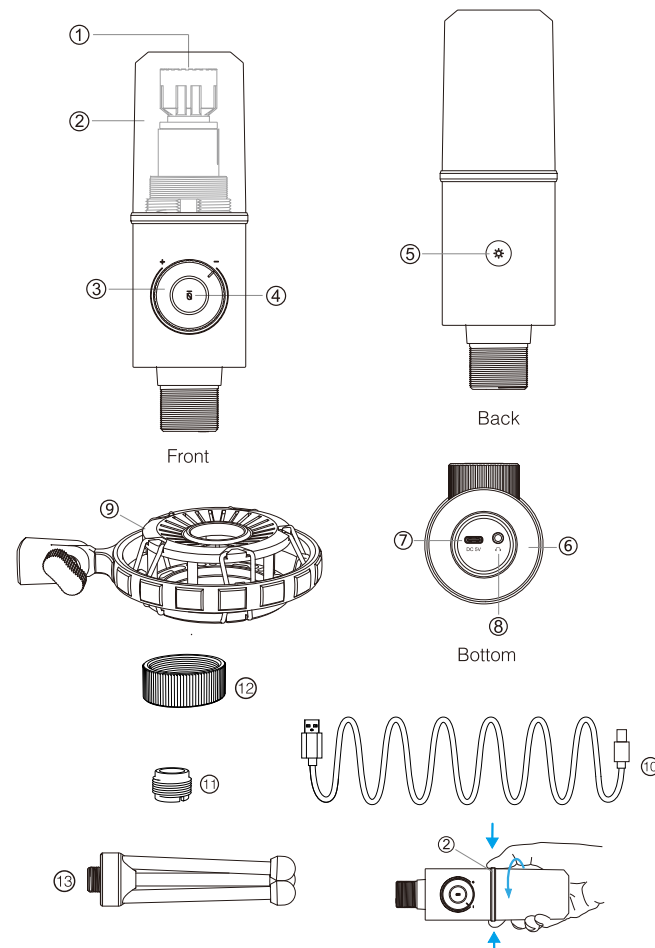
Meets Harmonized Standards EN 55032:2015 and EN 55035:2017, for residential (E1) and light industrial (E2) environments.

The Declaration of Conformity can be obtained from:

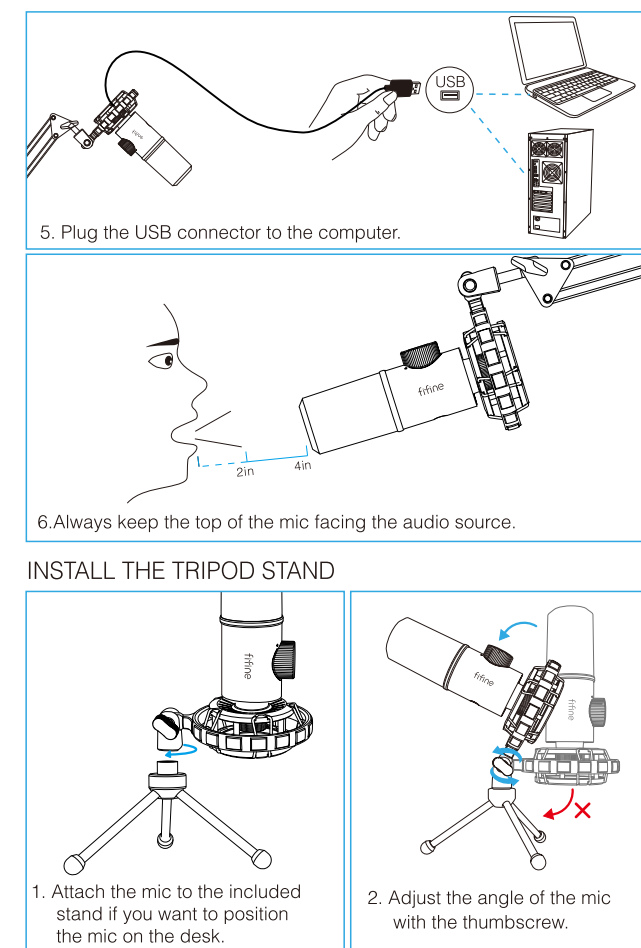
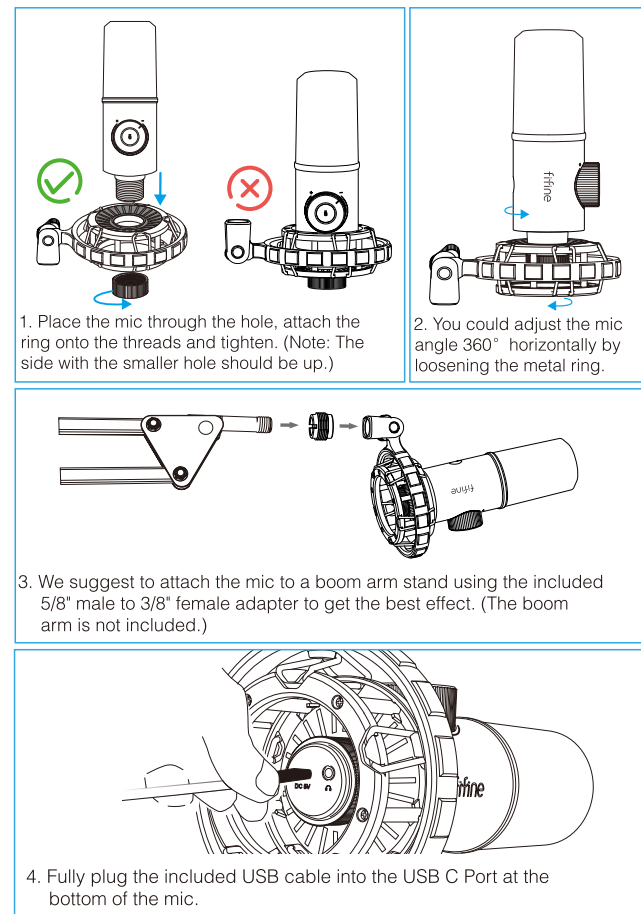
Authorized European representative:  
Name: Sea&Mew Consulting GmbH  
Address: Mittenhuber Straße 4, 92318 Neumarkt, Deutschland  
Contact Person: Yuan Li  
Tel: +4915224685061  
E-mail: [Compliance.EU@outlook.com](mailto:Compliance.EU@outlook.com)

## PRODUCT DESCRIPTION

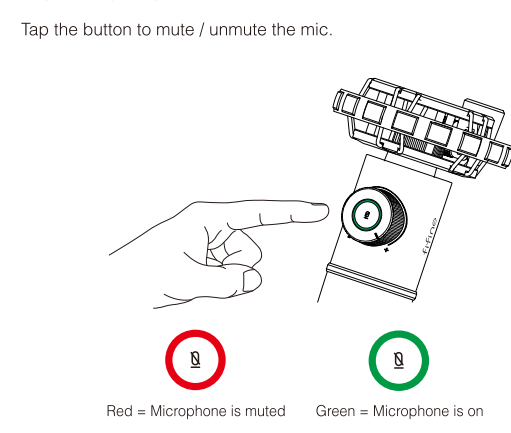
- Microphone Capsule - Dynamic microphone element with cardioid polar pattern.
- Detachable Windscreen - Offers maximum protection from plosive breath noise. Could be removed by unscrewing the base of the windscreen and gently pulling.
- Microphone Gain - Control the sensitivity of the mic capsule.
- Mute Button and LED Indicator - Tap to mute or unmute the mic. If the light is green, the mic is active, if the light is red, the mic is muted.
- RGB Button - Tap to turn on/off the RGB lighting.
- RGB Lighting - The RGB Rainbow lighting is on/off when you tap the RGB Button.
- USB C Output - Connect directly to your computer via the included USB cable.
- Headphone Jack - 1/8 inch (3.5 mm) stereo jack for monitoring your voice in real time.
- Shock Mount - Isolate the mic and suppress the sound of unintentional rumbles and bumps.
- USB Cable (8.2') - Type A to Type C USB cable. (Only the included USB cable is 100% guaranteed for compatibility.)
- 5/8" Male to 3/8" Female Screw Adapter. For connecting the mic to boom arm stand (not included) if needed.
- Metal Ring - Used to hold the mic in the shock mount.
- Tripod Stand (bonus)



## GUIDANCE FOR USE

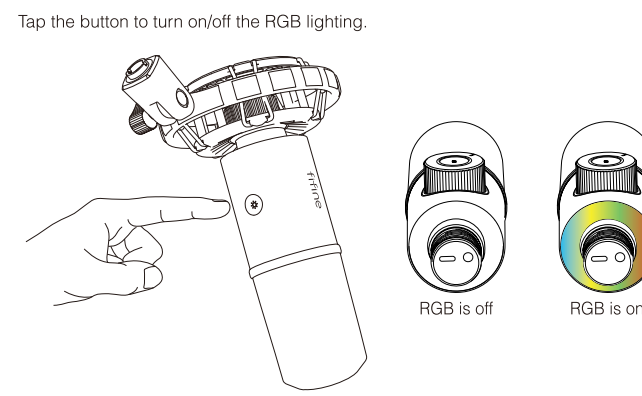


## MUTE BUTTON



Make sure the LED light is green when you are going to use the mic.

## RGB BUTTON

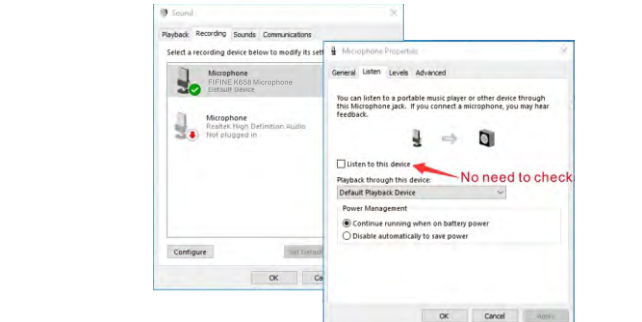


## HEADPHONE OUTPUT

The K658 mic includes a standard 1/8" (3.5mm) headphone jack for monitoring and playback. Plug the headphone to the 3.5mm jack at the bottom of the mic if you want to monitor your voice in real time. Choose this mic "FINE K658 Microphone" as the input device of your computer if you want to monitor your voice mixed with the sound from computer.

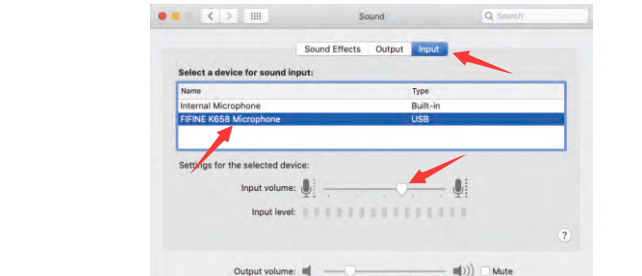
Note:

- Make sure to plug your headphone into the headphone jack of microphone fully.
- When the mic is on (the LED light is green) and you don't turn the Mic Gain to zero, you will hear your voice at once. No need to login any recording software (Apple-Macintosh systems) or click "listen to this Device". (Windows systems).



## Apple MAC OS

- Hook up the mic to computer. The LED indicator is green, means the mic is on. Your computer will automatically install the driver of the mic. There may be no pop-up message reminding this process though.
- Go to the System Preferences.
- Click Sound to display the Sound preference pane.
- Click the Input tab and select the "FINE K658 Microphone" as the device for sound input.



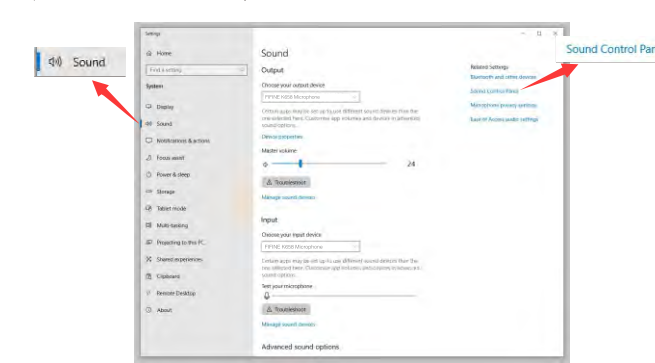
## 5. Output Settings

- Output the audio from the mic. Plug the headphone to the 3.5mm jack at the bottom of the mic if you want to monitor your voice in real time. Click the Output tab and choose "FINE K658 Microphone" if you want to monitor your voice mixed with the sound from mac.
- Output the audio from Mac. The mic will become the default output device automatically when it plugs into the Mac. If you want to listen to the sound from the built-in speaker of mac directly, please choose the "Internal Speakers" as output device.

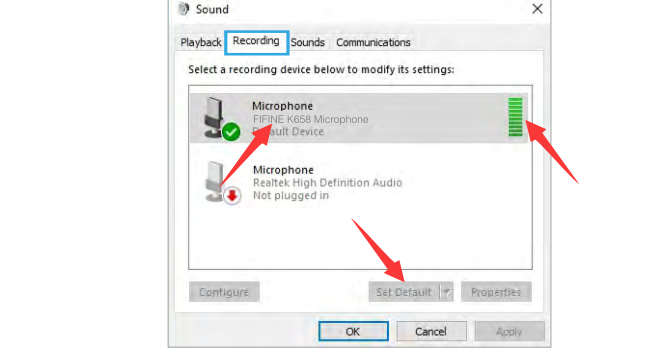


- If you want to connect your earphone to Mac and listen to the sound, please select the Headphones as output device.

- Click the Sound control panel.

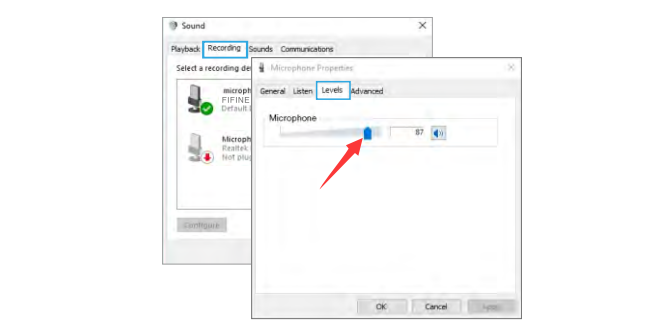


- Click the Recording tab, and choose "FINE K658 Microphone" as the default device. When you speak into mic, the volume meter will turn green and bounce. If it remains unchanged, please reset the computer and replug the mic in the available USB ports of the computer.



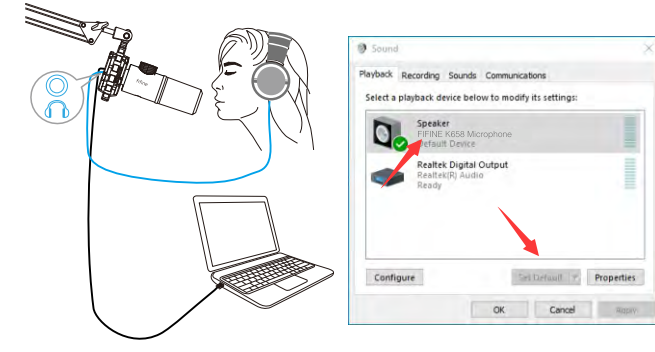
- Adjust input volume - Double click the "FINE K658 Microphone" to open the Microphone Properties window and click the Levels tab.

- Drag the progress bar to adjust the mic level. (You can also turn the mic gain up or down by adjusting the knob on the mic.)

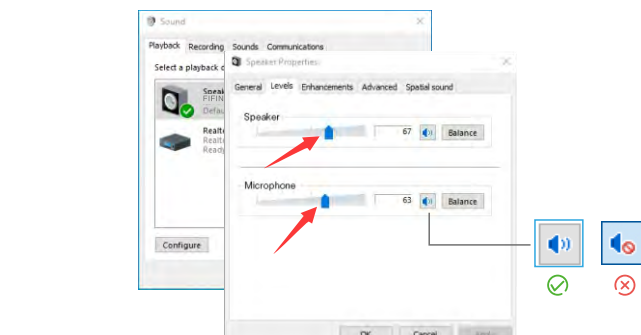


## 2. Output settings

- Plug the computer audio from the mic. a. Plug the headphone to the 3.5mm jack at the bottom of the mic if you want to monitor your voice in real time. Click the "Playback" tab from the Sound pane, select "FINE K658 Microphone" as the default output device if you want to monitor your voice mixed with the computer audio.

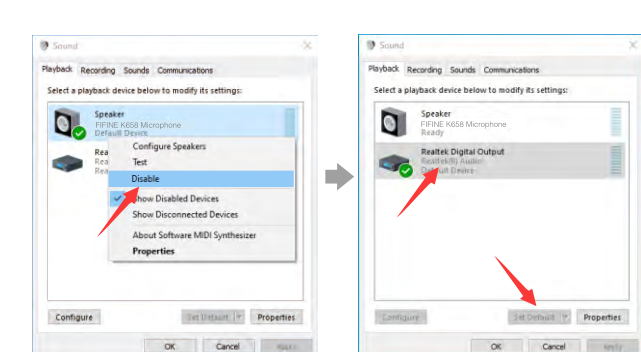


- Click the Speaker (FINE K658 Microphone) - Properties - Levels, and drag progress bar to adjust output volume.

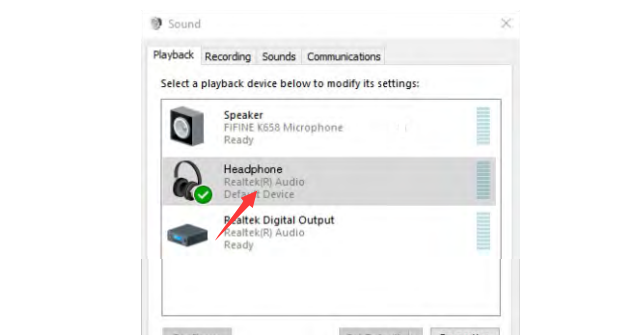


(Make sure the speaker and the microphone are active under the Levels tab.)

- Output the audio from the computer. a. The mic will become the default output device automatically when it plugs into the computer. If you want to listen to the sound from the built-in speaker of the computer directly, please click the "Playback" tab from the Sound pane and choose "Realtek High Definition Audio" as the default output device.

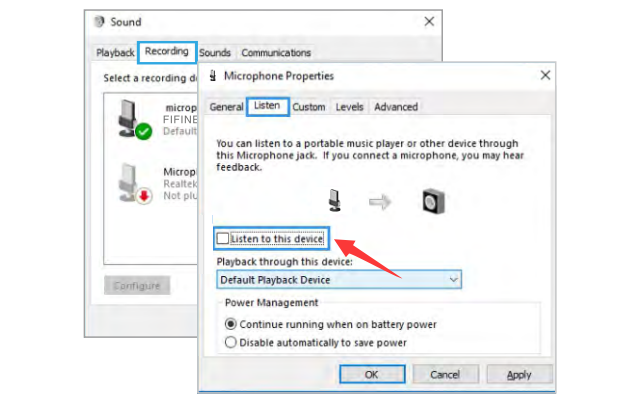


- If you want to connect the headphone to the computer and listen to the sound, please select the Headphone as output device.



Note: (Applicable for MAC and Windows)

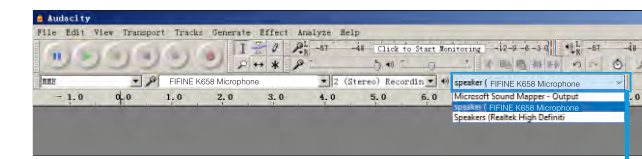
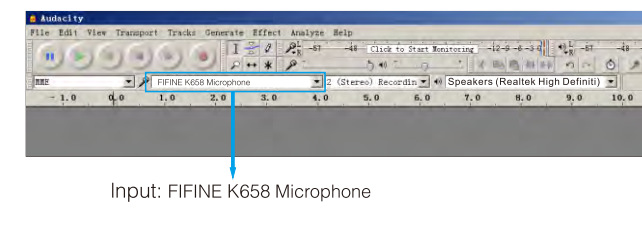
- If the computer prompts that it's unable to identify this USB device, please restart computer and replug the mic into other USB port.
- If mic is recognized but no sound coming out, please check whether System Sound is mute and whether you have turned the knob on the mic to minimum. Make sure the LED indicator is green (means the microphone's on).
- If your computer runs windows, please check off the box "Listen to this device" when you are using any recording software (such as Audacity) or chatting software (such as Skype), otherwise you would hear double audio just like echo. Click the "Recording" tab and click the FIFINE K658 Microphone - Properties - Listen - check off the box "Listen to this device" - Apply.



- If your computer runs windows 10, please go to settings > privacy > microphone and click the Allow apps to access the microphone to ON then restart.

## RECORDING SOFTWARE SETTINGS

- Pls select "FINE K658 Microphone" as the input device from the setting when using recording software. Take the Audacity for example. If you monitor your audio from headphone jack of computer, please select "Headphone (Realtek(R) Audio)" as output device. If you monitor from the mic headphone jack, select the FIFINE K658 Microphone as ouput.



Output: Pls choose correct output

Note: If the recording software (such as Audacity) doesn't recognize the mic, please log out the software first, replug the mic in the computer and launch the software again. Then the mic will be in the drop down option of input device.

- Make sure to check off the box "Listen to this device" from the sound system when you are using any recording software, or else you would hear duet of yourself just like too much echo.
- There are several ways to improve the recording by using Audacity. Come to <https://fifinemicrophone.com/blogs/news> to search the better solution or SEARCH WIDGET for your interested subject in our blogs.
- For windows computers, we recommend to use Audacity. For Apple computers, you can use the QuickTime Player to test the recording.

## IMPORTANT NOTICE

- Setting the volume levels. Correct adjustment of microphone level is important for optimum performance. Ideally, the microphone level should be as high as possible without overloading the input of your computer. If you hear distortion, or if your recording program shows levels that are consistently overloaded (at peak levels), turn the microphone gain (or level) down, either through the knob on the mic, the system settings, or through your recording software. If your recording program shows insufficient level, you can increase the microphone gain either through the knob on the mic, the system settings, or through your recording software.
- Selecting software. You have many choices in recording software. Audacity, available for free online at <http://audacity.sourceforge.net/>, is a widely used software.

Note: You need to plug the mic in the computer first and then launch the recording software. The software may not recognize the mic if you plug the mic into the computer after you have launched the software.

- Positioning your microphone. To achieve the best frequency response, it is important to have the mic capsule (the top of the mic) pointed at the user's mouth, instrument or any other sound source. For speaking/singing applications, the ideal position of the microphone is directly in front of the person who is speaking/singing. The same position is optimal when miking an instrument such as an acoustic guitar, drums or piano. Test the mic in different positions to find the best sound for your particular setup.
- Protecting your microphone. Avoid leaving your microphone in the open air or in areas where temperature exceed 110° F (43° C) for extended periods. Extremely high humidity should also be avoided.

Choose your output setting. When you plug microphone to your PC, it cancels the audio from any other audio file played or there's no sound on the playback, you need to manually select the "speaker (Realtek High Definition Audio)" as the default playback device, if you want to output computer audio via the computer built-in speaker.

## SPECIFICATION

Type:	Dynamic
Power Supply:	5V
Operating Current:	110±5mA
Frequency Response:	70Hz-15KHz
Polar Pattern:	Uni-directional
Sensitivity:	-50±3dB
S/N Ratio:	≥70dB
Max. SPL:	110dB

## fifine K658 USER'S GUIDE

